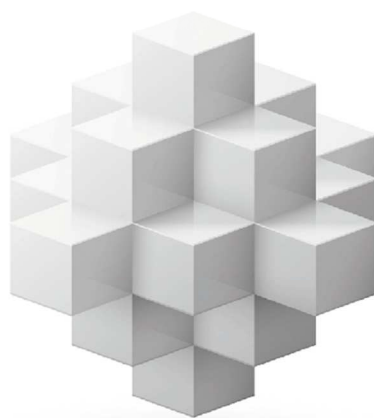


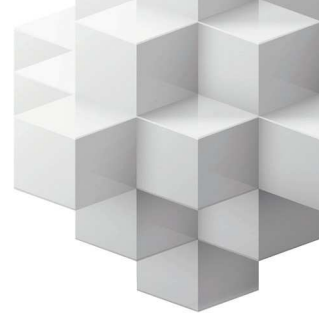
GRESPANIA **TECHNICAL** SOLUTIONS

VENTILATED FACADES WITH COVERLAM

RIVET SYSTEM

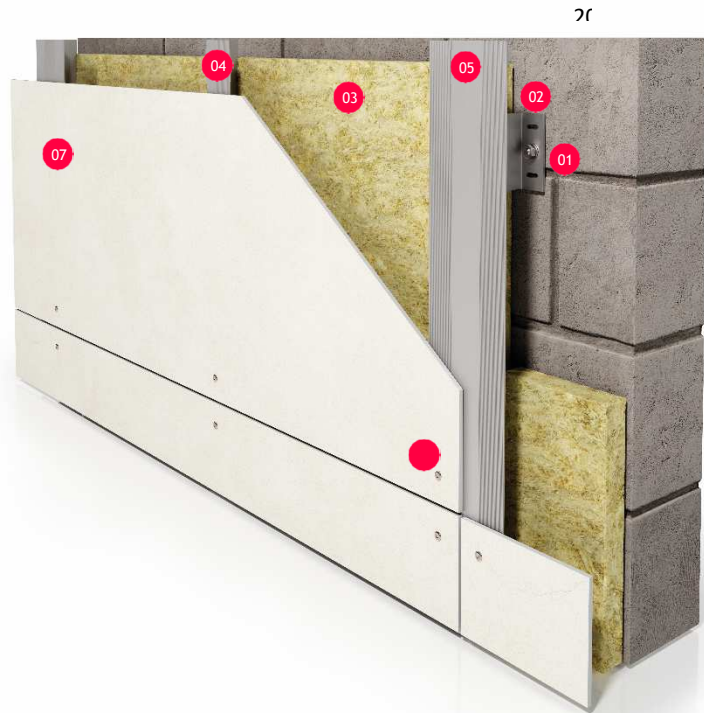


GRESPANIA
CERAMICA

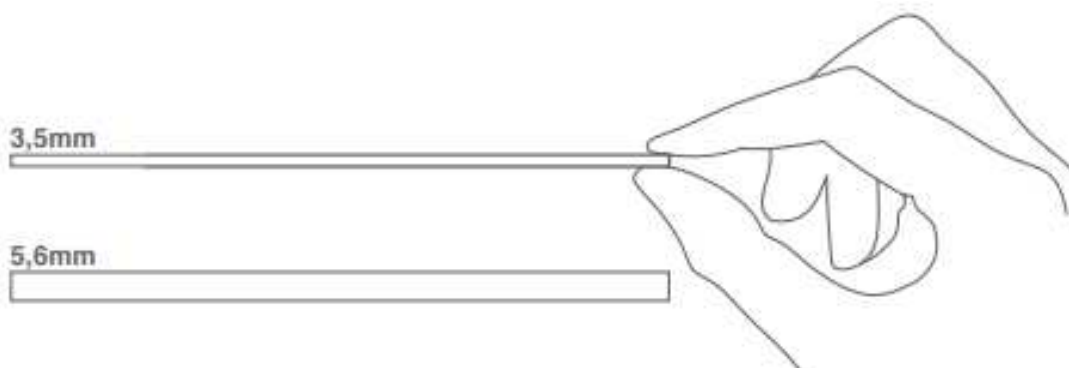


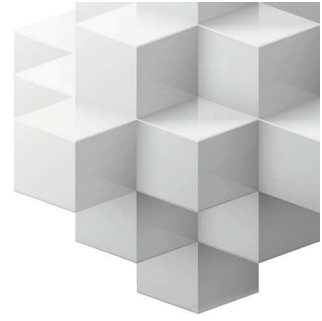
VENTILATED FACADE WITH RIVET SYSTEM

- 01 ANCHORAGE
- 02 BRACKET
- 03 INSULATION
- 04 "L" PROFILE
- 05 "T" PROFILE
- 06 RIVET
- 07 COVERLAM



Coverlam, in its thicknesses of 3.5 and 5.6 mm, can be installed with the Rivet system.





HOLES

Metal substructure and number and position of holes must be evaluated by competent designer, considering wind and another loads, thermal expansion requests and any local regulation.

The material can be processed directly at the building site or at a manufacturer. Coverlam slabs must be drilled with a water-jet machine or with diamond-tipped drill bits suitable for processing thin porcelain slabs.

All rivet holes in the slab and substructure must have the diameter required by the rivet manufacturer or at least **5 mm**, and a distance from the edge equal or greater than **50 mm**, measured from the hole center.

Keep at least two 5 mm holes in the central area as fixed points.

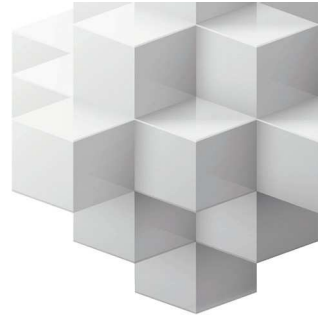


RIVETS

Rivets can be easily obtained from different companies present on the market. The rivet body must be made of stainless steel or aluminum to prevent corrosion at the pullout point.

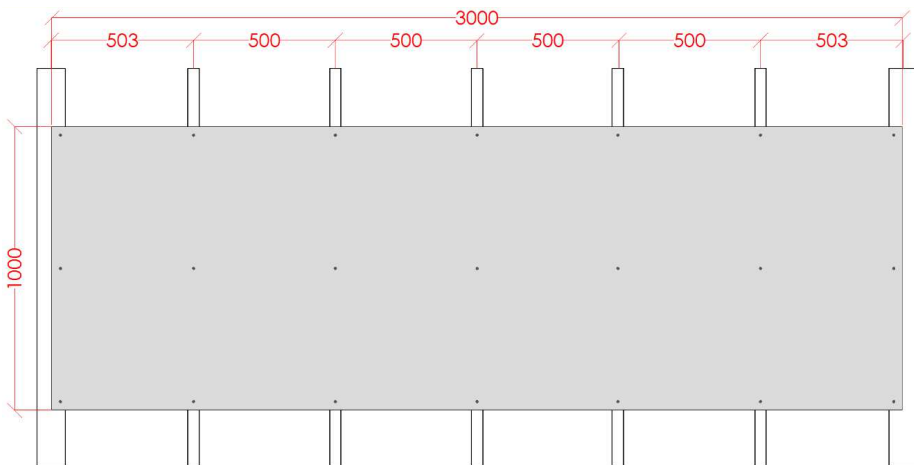
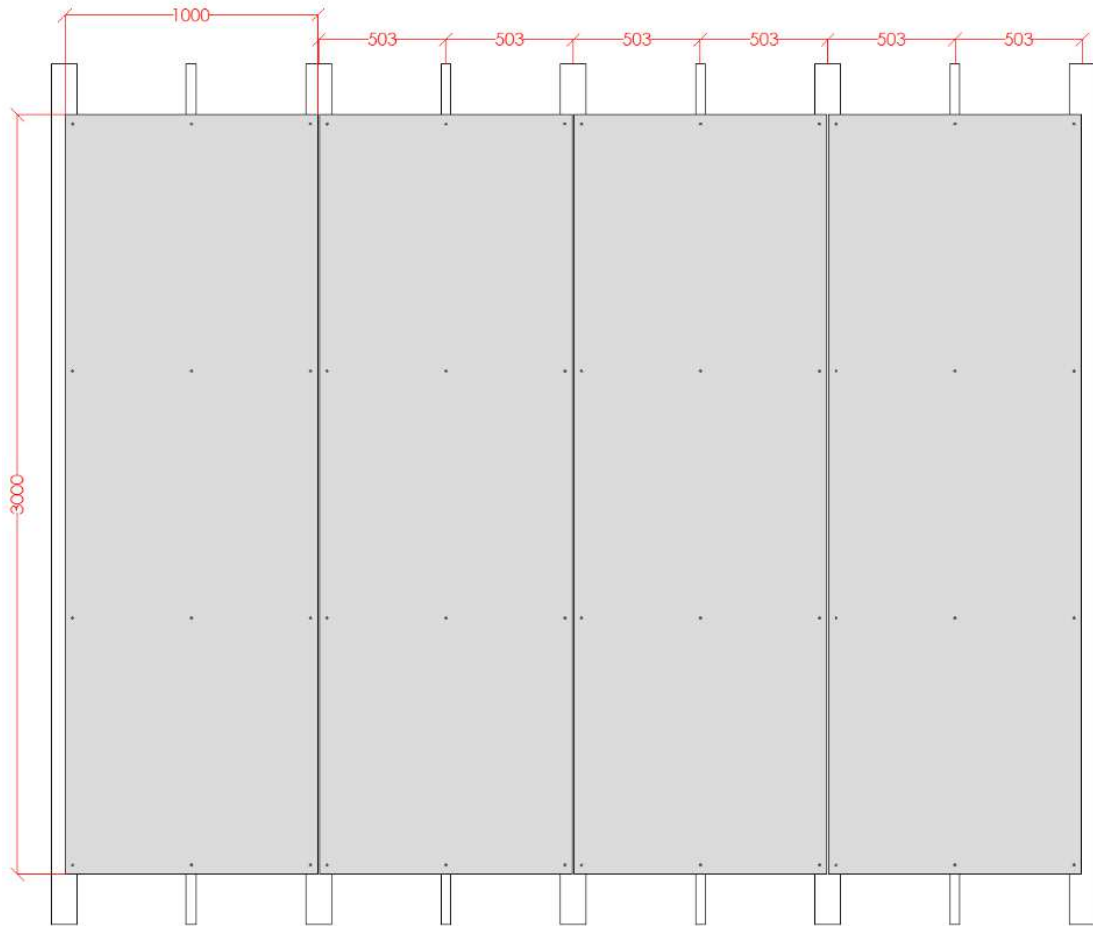
A washer in EPDM rubber 1 mm thick and D-1 mm in diameter must be placed between the slab and the rivet head, for the purpose of eliminating possible stress that would damage the connection between the slab and the rivet. Collapsible black adhesive tape in neoprene (or an equivalent material) must be inserted on the vertical sub-structure, in correspondence with the holes in the slab, to eliminate vibrations.

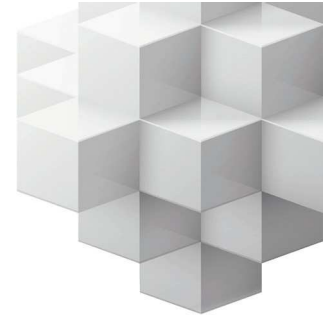




INSTALLATION

Coverlam can be installed vertically and horizontally, taking care while handling them. To correctly move the slab, we advise using suction cups or frames with suction cups to make the procedure easier. The rivet installation process must take place without applying particular pressure on the slab, avoiding shocks and unsuitable tensions near the hole.





To correctly mount the slab, we advise fastening it with at least three rivets, which are not vertically or horizontally aligned, to secure the slab to the façade immediately and then proceed to install the remaining fasteners.

The vertical or horizontal gap between the slabs must be at least **5 mm**.

Sub-structure profiles must be adequately sized, with a width and surface finish which guarantees correct installation of the rivets. The distance between the profiles must be based upon the wind pressure. Choosing and sizing brackets depends on the resistances required and the insulation thickness.

GRESPANIA

CERAMICA

GRESPANIA S.A.
CV-16
Ctra. Castellón-Alcora km 2,200
P.O.Box 157
12080 Castellón
tel +34 964 34 44 11
fax +34 964 34 44 01
mail@grespania.com

GRESPANIA S.A dispone de un sistema de gestión certificado de acuerdo a las normas ISO 9001:2008 certificado N° 44 100 127697 e ISO 14001:2004 certificado N° 44 104 127697 en sus plantas de NULES y CASTELLÓN

GRESPANIA S.A. uses a management system within its facilities of Nules and Castellón in accordance with ISO 9001:2008 certificate N° 44 100 127697 and ISO 14001:2004 certificate N° 44 104 127697